

MUSCLE TOOLS Q4 2025 EDITION

# HIGH TECH **TO** HARD TECH



**BOSCH**

**ROBINAIR**

**OTC**

*The most advanced diagnostics, tools & equipment*

FORGING INTO  
**100** YEARS  
of  
EXCELLENCE  
&  
INGENUITY

WATCH FOR SPECIAL PROMOTIONS,  
SALES AND NEW ITEMS AS WE CONTINUE  
TO CELEBRATE OUR 100TH YEAR



[otctools.com/100years](https://otctools.com/100years)

**OTC**



CELEBRATING



**1234yf** is here  
for Ag, Trucking  
industries

More on [page 6](#)



ESI[TRUCK] TROUBLESHOOTING  
LICENSE  
12-Month Security Card

**FREE**

Buy a 3824A ESI[truck] Heavy  
Duty diagnostic scan tool,  
get a FREE 3824-08R ESI[truck] -  
Troubleshooting and Repair Software  
License (over \$1,700 value)

[Learn More](#)



**FREE**

**30-DAY  
MONEY BACK  
GUARANTEE**

Buy an ADS 525X or 625X  
diagnostic scan tool,  
get a FREE Bosch TPA 300  
TPMS Tool (\$899 value)

[Learn More](#)

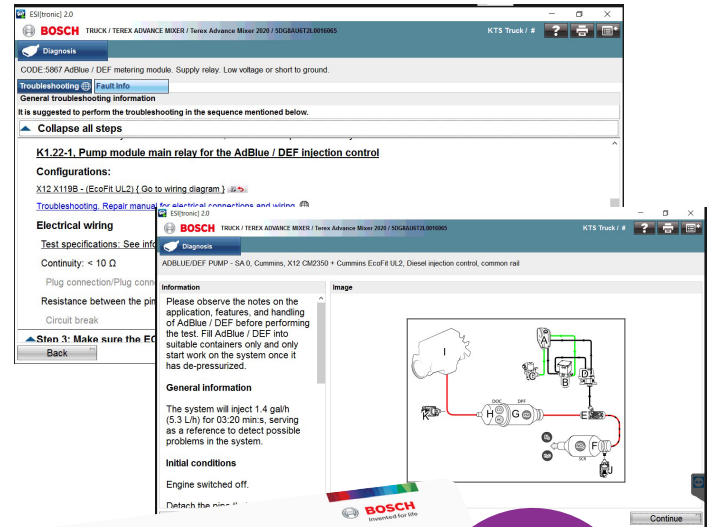


Invented for life



## Buy a 3824A ESI[truck] Heavy Duty Diagnostic Scan Tool, get a free 3824-08R ESI[truck] Troubleshooting & Repair Software License

Limited Time Promotion: October 1, 2025 - December 31, 2025



**ESI[TRUCK]  
TROUBLESHOOTING  
LICENSE**  
12-Month Security Card

**FREE**

### 3824A Bosch ESI[truck] Heavy Duty Diagnostic Scan Tool

- Perform fast and accurate diagnostics to get the repair done right and the vehicle back in operation.
- Extensive make, model, engine, and system coverage for North American commercial vehicles / HD trucks.
- Enhanced bidirectional controls, including diesel particulate filter (DPF) regen, cylinder cut-out, injector coding, component actuation, special tests, and more.
- OHW upgrade available for agricultural and construction vehicles.

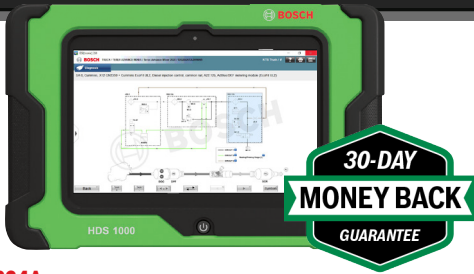
### 3824-08R ESI[truck] - Troubleshooting and Repair Software License

- Provides diagnostic support via guided, step-by-step troubleshooting procedures for diagnostic trouble codes (DTCs) and vehicle symptoms.
- Features a comprehensive database of DTC resolutions and symptom-based troubleshooting guides.
- Enables efficient and effective repair across a wide spectrum of issues.

Committed to quality because your reputation depends on it.

[boschdiagnostics.com/promotions](https://boschdiagnostics.com/promotions)



**3824A****ESI[truck] Heavy Duty Diagnostic Scan Tool**

Truck, engine, and system coverage

- HDS 1000 10" touchscreen Windows® 10 tablet
- Ruggedized drop-tested tablet designed for the garage environment
- Enhanced bidirectional controls
- Injector coding, forced DPF regen, VGT relearning, special tests, component actuations & more
- Proprietary ESI[truck] software saves valuable labor time with intuitive software – scan procedures the same for a Sprinter van to a Terex Titan dump truck
- All-in-one subscription unlocks access to full color-wiring diagrams, live data stream, and repair information for all makes and models
- All diagnostic functions continue after subscription expiration\*

**3824A-TBL****Heavy Duty Tablet Upgrade**

- Upgrade an existing 3824 EST[truck] Tablet (DCU100) to the new and improved 3824A model
- Includes Windows 10 Touchscreen tablet, carry case and battery pack.

**3824-08R****Troubleshooting & Repair Software License**

- Faster, more efficient heavy duty vehicle repairs
- 13,000+ procedures guide user through each step to troubleshoot vehicle issues
- Procedures by DTCs or by vehicle symptoms
- Technical Service Bulletins (TSBs) included

\*Applies to Truck (3824A and 3824-08) and OHW (3824CBL-UPG and 3824-08OHW) Coverage

**The Bosch ESI[truck] platform is unlike any other in the industry, taking heavy duty diagnostics to the next level.**

**3824CBL-UPG****ESI[truck] Off-Highway Upgrade Cable Kit with Introductory Software License**

Add off-highway vehicle and machinery coverage for multiple manufacturers to your 3824A ESI[truck] scan tool.

**Kit contents:**

- 10 cables for machinery, construction equipment, agricultural vehicles and more
- ESI[truck] off-highway software package with full diagnostic capabilities. Introductory off-highway software expires when your ESI[truck] heavy duty truck software expires
- Software renewals can be done simultaneously, ensuring continuous HD truck and off-highway vehicle coverage

**3824BSC****ESI[truck] Software and Adapter Kit**

- Includes the ESI[truck] platform features, adapters, software, and coverage for use on your own Windows 10 device
- ESI[truck] diagnostic software with the functions and aftermarket coverage techs need, RP1210 Data link adapter, 6 and 9 pin cables, and HD/OBD II cables

**3824-08****ESI[truck] 1-Year Renewal License**

- 1-Year (12-month) renewal license for existing ESI[truck] user

**3824-08OHW****ESI[truck] Off-Highway 1-Year Software License**

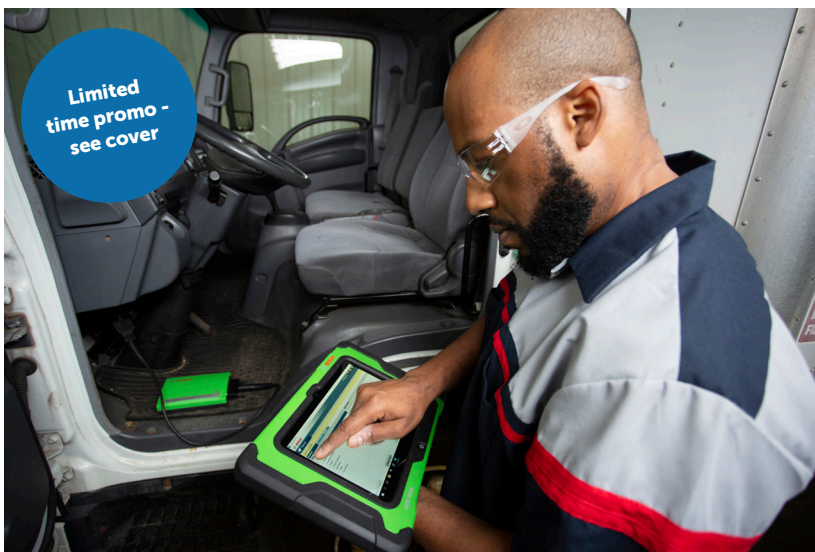
- 12-months of off-highway diagnostic coverage, including all coverage updates
- Used to renew initial software included with Off-highway upgrade cable kit with introductory software license

Over 50 specialty cables available for exclusive coverage of OHW vehicles



**For more information on software updates and off-highway coverage upgrades, visit [boschdiagnostics.com](http://boschdiagnostics.com)**

Off-highway cable upgrade kit and off-highway software only compatible with 3824A and 3824BSC ESI[truck] diagnostic tools. Customer must first purchase Off-highway upgrade cable kit with introductory software (3824CBL-UPG) prior to purchasing or activating Off-highway 1-year software license (3824-08OHW)



Limited time promo - see cover



**ADS 525X**  
**3945**

**ADS 625X**  
**3975**

## ADSX Diagnostic Scan Tools

**Diagnose Faster. Fix Smarter.**  
**Move More Vehicles.**

- Rapid DTC scan powers all-system DTC scans
- Complete pre- and post-reporting with wireless printing
- Topology View OE-level network information (ADSX)
- Unlock access to OEM Secure Gateway Modules (SGW) for FCA/ Stellantis, Nissan Ariya, Hyundai, Kia, Genesis, Ford/Lincoln, Honda/ Acura, Subaru, Porsche, and Volvo vehicles. \*Access solution varies by OEM (directly on ADSX tool software, via AutoAuth, and more)
- Access to Repair Source – 100% OEM-licensed repair information library with the most expansive, reliable, and up-to-date vehicle coverage and information, right from the source
- OEM full-color wiring diagrams & enhanced bi-directional testing with Enhanced Subscription
- Access to Code – Assist™ Top Reported Fixes by Identifix
- Quick links to Identifix, Mitchell, AllData and more
- On-tool and online training videos
- All new Android 11 software with access to Google Play Store



**3920**

## 3920 VET 100 Circuit Analysis Tool

**Quickly identify electrical issues in failed circuits**

- Perfect tool for Data stream analysis using your scan tool
- Identify failed circuit component, wiring or PCM
- Simulates the sensor you are diagnosing by inputting a determined voltage at the sensor location
- Allows input voltage from .5VDC -7VDC in .5VDC increments
- Use your scan tool to verify if correct voltage is being applied to circuit
- Bypass sensor to send desired voltage back to PCM
- Works with 12V and 24V systems with vehicle voltage displayed. Also includes a "flashing" low battery voltage indicator



Other recommended product  
**OTC**

**3990**

## OTC 1000V CAT III Hybrid Multimeter with Insulation Resistance Test

OTC 1000V CAT III Hybrid Multimeter with Insulation Resistance Test. A full function Multimeter with an insulation test feature is used to test for voltage leaks through insulation found on Hybrid and Electric Vehicles.

### Features:

- Hybrid Insulation Resistance Test
- True RMS
- Auto Ranging
- Diode Test
- Continuity Buzzer
- Data Hold
- Data Logging
- Display Backlight
- Min/Max Mode
- Sleep Mode
- Low Battery Display



Watch the video to learn more about the BAT 6120-US Battery Charger & Power Supply

**NEW**



**BAT6120-US**

## BAT 6120-US

**Battery Charger & Power Supply**

High-Power 12 V Battery Charger and 120 Amp Power Supply.

- Supports and maintains 120 A DC Continuous Output (@AC120 V~240 V, 25°C)
- Important for late model vehicles which have higher current requirements to maintain stable power supply during programming
- Supports Flooded/AGM/EFB/GEL/Lithium (LFP) batteries
- 12 V Lead Acid Battery Charge. Charging Diagnosis / 12 V Lithium Battery Charge, BMS Wake Up
- Maximum power output: up to 1750 W
- Flexible operation modes to fulfill customer needs
- Fits neatly on a desk, bench, or showroom floor. Also wall-mountable



**3926**

## BAT 35

**Vehicle Computer Memory Saver**

BAT 35 maintains the memory of the on-board vehicle computer to prevent losing memory settings when you disconnect a battery.

- Retain computer memory and on board memory sets such as: keyless entry codes, seat memory, digital radio settings, clocks, car alarms etc.
- Includes 12V, 7amp hour lead acid, sealed battery for long life expectancy
- Six LED indicator lights, three for charging functions and three for power storage conditions for ease of use
- Built-in OBD II cable for vehicle power supply while vehicle battery is disconnected



Watch how the BAT 155 helps diagnose a hard-starting medium-duty truck



**BAT155**

## BAT 155

**Heavy Duty Battery and Electrical System Analyzer**

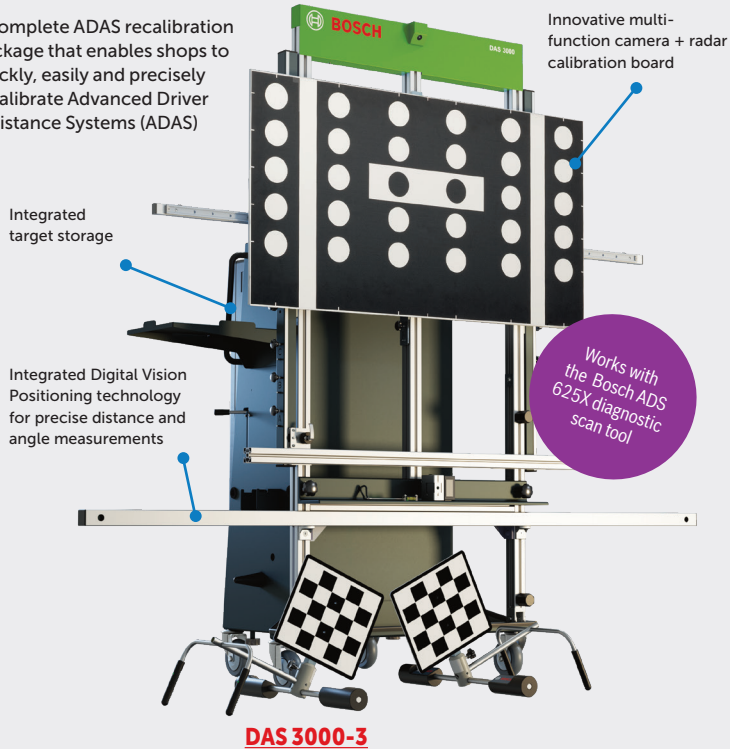
- 100 - 6,000 Cold Cranking Amp (CCA) Test Capacity
- Enables Testing Battery Packs (Multiple Batteries connected together) in the vehicle
- Infrared Temp Sensor for measuring battery temp (increases accuracy of CCA measurement)
- Optional Amp Probe and Voltmeter
- Tests 6V, 12V batteries and 12V, 24V charging systems



## ADAS Calibration Solution

### DAS 3000

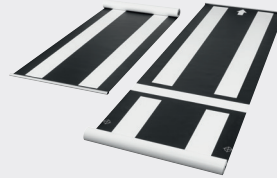
A complete ADAS recalibration package that enables shops to quickly, easily and precisely recalibrate Advanced Driver Assistance Systems (ADAS)



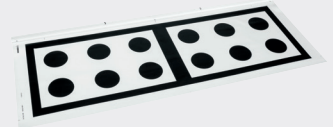
### Calibration Mats

Brand specific equipment for the proper calibration of the Rear and Surround View cameras according to the OEM specifications implemented by Bosch routines and workflows.

### Near Range Camera Systems for Volkswagen group



Calibration set for 360° Cameras  
Generation 2:  
**CTA 500**



Calibration set for Rear Camera:  
**CTA 501**



Calculate your annual revenue by  
investing in the Bosch ADAS solution

## Leak Testers

Safe and cost-effective leak detection solutions for passenger and heavy duty vehicles



**SMT 500**



**SMT 300**



**1699500000**

### SMT 500

#### Low Pressure Leak Tester Smoke Machine

- On Board Air compressor eliminates need for shop air or inert gas tank during use
- Variable flow control detect leaks as small as 0.01" in sealed systems
- Pressure decay testing
- Compact, lightweight design (ultra-portable at 11 lbs)

### SMT 300

#### LeakTamer II EVAP & Diagnostic Smoke Machine

- Multi-purpose tester designed not only for EVAP testing but for leak detection in any low pressure closed system including oil leaks, exhaust leaks, wind leaks, water leaks, EGR leaks and many more
- Fully featured machine with graduated smoke flow control valve, air flow meter, and pressure/vacuum decay gauge
  - Full complement of accessories and storage case included

### HPT 500

#### High Pressure Leak Tester

- Produces leak detection "smoke" at higher pressure than standard machines (up to 20psi) for higher pressure systems
- Higher flow rate fills the system with smoke up to 5 times faster
- Ideal for finding leaks in exhaust after-treatment systems
- Test entire system, from intake to exhaust, in one 15 minute test
- High-pressure and large volume systems found in heavy-duty truck and turbocharged passenger vehicles

## TPA 300 TPMS Programming Tool



**3934**

- Activate and read TPMS sensor data, program sensors, check remote keyless entry signal and display sensor data in seconds
- Perform OBD II relearns within minutes when paired with a compatible Bosch manufactured diagnostic scan tool
- Full database of indirect, manual and auto relearn procedures
- Intuitive, full-color display with easy vehicle lookup by make, model and year
- Supports all known OE and aftermarket programmable sensors for all light vehicles
- Includes 3 years of software updates for the latest features and coverage



Compare leak  
detection solutions  
from Bosch

# Major Ag and Trucking OEMs are switching to 1234yf

Ask your Robinair rep for more info



AC1234-9  
Connected



## Be ready to service YF systems with:

- › A new machine meeting SAE J2843 standard; Robinair's AC1234-4 or AC1234-9
- › A new leak detector meeting SAE J2913 standard; Robinair's LD3, LD5 or LD7
- › A syringe-type oil injector to inject oil back into the system; Robinair's 18465
- › Optional tracer gas leak detector to reduce cost searching for leak; Robinair's LD9-TG



**SEE WHAT YOU  
MIGHT BE MISSING**  
**Calculate your return.**  
One service per day adds  
thousands in profit.

### A New Leak Detector

Your existing leak detector may not recognize R-1234yf, meaning you may not catch an expensive refrigerant leak. Invest in one that meets SAE J2913 and J2791 standards.

- › LD3 leak detector automatic calibration and audible alerts
- › LD5 leak detector with bar graph mode and color display
- › LD7 premium leak detector with bar and pinpoint graphing modes and detects both R134a and R1234yf



LD7 shown

### New Syringe-Type Oil Injectors

1234yf systems have different fittings and couplers, requiring a new syringe-type oil injector to put oil back into the system. Current SAE standards for 1234yf service does not allow automatic oil injection on a machine.

- › 18465 PAG-labeled 1234yf injector for low-voltage systems in gas and diesel vehicles
- › 18470 POE-labeled 1234yf injector for electric and hybrid vehicles



18465 shown



**80211TMP****Bluetooth temp probes master kit**

- Read and track temperatures from multiple locations from your A/C machine
- Use up to 2 probes per compatible Robinair machine
- Enables WiFi and Bluetooth capabilities on NI and AC1234-4 machines

**What wireless accessories fit my machine?****Non-wireless A/C Machine**

A/C Machine	Temp Probes
34288NI, 34788NI, 34788NI-H, 34988NI	80211TMP
34998, AC1234-9	—
AC1234-4	80211TMP

**Wireless Enabled A/C Machine**

Temp Probes
80213 or 80212*
80213 or 80212
80213 or 80212*

\*Use of 80212 or 80213 on NI or AC1234-4 requires machine first be WiFi/Bluetooth enabled using 80211TMP

\*\*Database purchase required for vehicle refrigerant capacity

**A/C system capacity databases**

- Confirm AC system charge capacities directly from your Robinair card for R-134a and R-1234yf systems, sold separately
- Includes charge amounts and component oil capacities for vehicle model years 1999 – 2023 using R-134a refrigerant and vehicle model years 2013 – 2023 using 1234yf refrigerant
- Database helps ensure the vehicle system is charged with the correct amount of oil, per factory and OEM specification

**34001** R-134a database for 34998 machine

**34412-G** R-134a database for 34288NI, 34788NI, 34788NI-H, and 34988NI machines

**R-1234yf database**

**34002** R-1234yf database for AC1234-9 machine

**34413-E** R-1234yf database for AC1234-4 machine

**34414-C** R-1234yf database for AC1234-6 machine

**Find leaks and diagnose system issues faster****Connected accessories, leak detectors, refrigerant analyzers and tracer gas detectors for R-134a and R-1234yf service****16995****R-ID Plus refrigerant identifier/analyzer**

- Analyze R-134a and R-1234yf refrigerant for purity and contamination
- Prevent contaminated refrigerant from being pulled into your machine
- Includes printer to add refrigerant purity to service report
- R-134a and R-1234yf tank adapter; R-134a and R-1234yf hoses included
- Available as 16990 R-ID without printer

**EVDC100****A/C Electronic Variable Displacement Compressor Tester**

- Control signal to variable compressor to accurately diagnose system problems
- Quickly diagnose and verify valve function, lowering total repair time and costs
- Includes connect adapters for both old and newer style compressors
- Heavy duty battery clips and cable provides power from vehicle battery, eliminating the need for batteries
- Made in the USA

**LD7****Premium refrigerant leak detector**

- Detects R-1234yf and R-134a leaks for use on most vehicles
- Sweep, bar graph and line graph modes make finding leaks faster, easier
- Features audible detection alert, UV LED lights for use with UV dye and inspection light
- Sensor life up to 10 years for reliable leak detection
- Available as LD3 and LD5 versions

**LD9-TGKIT****Tracer gas leak detector service kit**

- Test systems for leaks under pressure, instead of vacuum
- YF systems can hide leaks under vacuum, requiring pressure testing
- 95% Nitrogen / 5% hydrogen tracer gas mix helps find leaks faster
- Kit includes 1234yf coupler, 134a coupler, Tracer gas detector, hose and Tracer gas regulator
- Available as LD9-TG, Tracer gas detector only

### Combining Simple Operation with Superior Accuracy

These machines will test, recover and recharge R-134a and R-1234yf automotive A/C system quickly and accurately.

#### R-134a Systems

#### R-1234yf Systems



Features	34288NI	34788NI	34788NI-H	34998	AC1234-4	AC1234-4SL	AC1234-9
Meets 1234yf standards for Off-highway, Agricultural, Trucking industries.	—	—	—	—	✓	✓	✓
Fully Automatic Function: Program to recover, vacuum, leak test and charge without operating panel valves.	Manual Valves	✓	✓	✓	✓	✓	✓
Automatic fluid drain/inject	Oil drain	Oil drain/inject*	Oil drain	Oil drain/inject, dye inject**	Oil drain	Oil drain	Oil drain
A/C System Flush: Flushes a vehicle's A/C system with refrigerant, eliminating any residual oil or other liquid. (Flushing adapters not included)	—	—	✓	✓	✓	✓	✓
Save & print before and after service data: Allows the user to store before and after service information by vehicle and print this information to provide to a customer.	—	✓	✓	✓	✓	✓	✓
Visual & Audible Alarm: Notifies the user when service is complete, or if a problem has occurred.	—	✓	✓	✓	✓	✓	✓
Vacuum Leak Test: Monitors level after evacuation, informs of possible leak.	—	✓	✓	✓	✓	✓	✓
Automatic Air Purge: Eliminates system-damaging air without monitoring gauges or opening valves.	✓	✓	✓	✓	✓	✓	✓
Automatic Refrigerant Refill: Maintains a user-selectable amount of refrigerant in an internal vessel and signals when it's time to change supply tank.	—	✓	✓	✓	✓	✓	✓
Vacuum Feature: Defaults to 15 mins, programmable up to 99 mins. "Remaining time" is displayed.	✓	✓	✓	✓	✓	✓	✓
Multilingual display	4.3" color LCD	4.3" color LCD	4.3" color LCD	10.5" hi-res touch screen	4.3" color LCD	4.3" color LCD	10.5" hi-res touch screen
Refrigerant Charging:	Low only	High, low or both	High, low or both	High, low or both	High, low or both	High, low or both	High, low or both
Refrigerant Management System: Displays refrigerant use and monitors remaining filter life. Prompts appear when 1/3 of filter life remains.	✓	✓	✓	✓	✓	✓	✓
Electric Vehicle: Capable of servicing high voltage electric compressor A/C systems.	—	—	✓	—	✓	✓	✓
Printer	30038	30038	30038	Mopria Print Service wireless printing	30038	30038	Mopria Print Service wireless printing
Bluetooth temp probes: Dual-zone temp recording and reporting	80211TMP	80211TMP	80211TMP	80212 or 80213	80211TMP	80211TMP	80212 or 80213
Bluetooth VCI: Reads YMME and refrigerant capacity	—	—	—	ACS-250***	—	—	ACS-250***

\* One oil bottle. \*\* Two oil bottles and one UV dye bottle. \*\*\*ACS-250 requires purchase of 34001 or 34002 database to read YMME and display refrigerant capacity

All machines use 34724 filter and 13172 maintenance kit

### Syringe-type Injectors



18480



18470

#### R-134a Oil Injectors

**18480** PAG labeled for gasoline and diesel vehicles

**18490** POE labeled for hybrid and electric vehicles

#### R1234yf Oil Injectors

**18470** POE-labeled 1234yf injector for electric and hybrid vehicles

**18465** PAG-labeled 1234yf injector for low-voltage systems in gas and diesel vehicles

### Refrigerant Recovery

#### 25700 Contaminated Refrigerant Recovery Machine

The Robinair 25700 is a contaminated recovery only device that is designed to remove contaminated refrigerant from vehicles that are equipped with R-1234yf and R-134a A/C systems.



#### 17990 Contaminated Refrigerant Tank Assembly





FORGING INTO  
**100** YEARS  
of  
EXCELLENCE  
& INGENUITY

## OTC'S ALL-AMERICAN JOURNEY FROM 2000 TO 2025

### 2000s 2011

Continued innovation drove rapid growth, success for OTC Tools.

Legendary Hub Grappler introduced, for on-car wheel bearing replacement.



### 2012

Acquired by Bosch Automotive Aftermarket division, combining parts, tools, and diagnostics.



### 2016

6637-ST Strut Tamer launched, delivering 4,000 lbs of compression force for strut service.



### 2017

New Kingpin pusher debuts, bringing 30 tons of force to HD service.



### 2020

Equipment line revamped to meet newest safety standards, reintroduced with Limited Lifetime Warranty.



Committed to quality because your reputation depends on it. [otctools.com](https://www.otctools.com)

## NEW! From OTC



### 5613 Vacuum/Pressure Gauge Kit

- Ideal for testing vacuum lines and components
- Accurately tests low pressure fuel systems & quickly diagnoses internal engine problems such as bad rings, valves and leaking head gaskets
- Kit comes complete with adapter for most applications



### 5630 Fuel Pressure Tester Kit

- Quickly and easily locate any malfunctioning fuel system component, including fuel filters, pressure regulators, fuel lines, and fuel pumps without removing it from the vehicle



### 5911A Drain Plug PRO

- Magnetically attaches to pre-loosened oil pan drain plugs so you can remove them without dropping and avoid getting burned with hot oil
- The patented design provides universal application to hex heads
- A flexible shaft can be used in virtually any location and still turn the plug as desired
- An added feature of the 5911A is a removable magnetic end with 1/4" square drive. When removed, the drain plug pro becomes a flexible-shaft 1/4" bit driver. Use for sockets and bit holders to get into hard-to-reach places including under dashboards and in engine bays to remove bolts once loosened.



### 5606 Compression Tester Kit

- Designed for complete compression testing on gasoline engines, including domestic, imports, motorcycles, marine, and small engines
- Unique problem solving features for today's limited space engine compartments

### 5605 Deluxe Compression Tester Kit

- Includes everything in the 5606 kit plus the deep well connector used on recessed plug well style heads and the new Ford Triton engine adapter using 16mm thread plugs



### 5610 Transmission/Engine Oil Pressure Kit

- Can be used for domestic and import applications
- High and low pressure gauges make this kit useful for both transmission and engine work
- Kit comes complete with adapter for most applications
- Designed to be used for both static and on road testing



### 6673 Universal Belt Tension Gauge

- Belt tension gauges are used to properly check drive belt tension on drive belts to ensure maximum belt and bearing life
- Scale reads 30-180 lbs.



### 5609 Cylinder Leakage Tester Kit

- Quickly diagnose internal engine problems such as bad rings, valves and leaking head gaskets
- Kit come complete with adapters for most applications



### 4503 Double Flaring Tool Kit

- Designed for double or single flare in copper, aluminum, soft steel brake line, and brass tubing (to 45 degrees)
- Includes five adapters 3/16" through 1/2" (4.8mm through 12.7mm)
- Chrome swivel, made of alloy steel reduces friction
- Forged yoke made of heat-treated steel



### 7402 Universal Outside Thread Chaser

- Quickly restore threads to near new condition without expensive thread cutting equipment



**6530 Ball Joint Intermediate Service Kit**

- This 20+ adapter kit covers many Truck/Van/SUV applications and some car applications
- This kit is a combination of 7249, 7918, and 7996 kits, and includes 20+ adapters, C-Frame, Ball Joint Application Guide, and carrying case

**6575 Hub Grappler**

- The complete solution for servicing wheel hubs and bearings on the vehicle without removing the steering components or knuckle
- Eliminates unnecessary alignments or the use of a shop press, cutting service time dramatically

**CA6630 Ball Joint Connected Adapter Professional Kit**

- This extra-large C-frame uses stainless steel ball bearings to securely hold cups and adapters, making it easier to setup your press to remove and install ball joints, U-joints, wheel studs and more
- The Professional Kit includes 25 cups and adapters for more than 600 vehicle applications, 76% more vehicle models than competitive C-frame kits.

**7503 Outer Tie Rod Remover**

- Works on FWD and RWD import and domestic vehicles
- Up to 5 tons of force can be applied

**7249 Ball Joint Service Kit**

- Removes and installs press-fit parts such as ball joints, universal joints, and truck brake anchor pins

**6697 Ford Axle Shaft Seal Installers**

- Correctly installs the seal onto the axle shaft and into the wheel knuckle, preventing front hub vacuum leaks that would cause the 4WD to not engage

**4512 Snap Ring Pliers Set - Internal/External**

- For internal or external snap rings; thumbscrew permits quick conversion
- Made of heavy-gauge tempered steel
- Also includes two stainless steel handled picks

**5900A-PLUS Master Torx Bit Socket Set, 53pc.**

- Updated 53-piece Master Torx Bit Socket Set plus special 24mm External Torx PLUS Socket (p/n 5932-24) required for Ford Super Duty pick-up beds starting model year 2017
- Socket kit includes various sizes of Torx, Torx PLUS, Tamper Resistant Torx, Bit Sockets and External Torx Sockets in 1/4", 3/8" and 1/2" square drive

**5950A CrimPro™ 4-in-1 Angled Wire Tool**

- The angled feature allows access to close quarters and facilitates superior crimps
- Compact 7-inch design used 4 ways
- Gripping nose - to pull, twist, bend, and shape

**5950S CrimPro™ 4-in-1 Wire Tool**

- Compact 7-inch design used 4 ways
- Gripping nose - to pull, twist, bend, and shape
- Crimper - crimps 12-20 AWG insulated and non-insulated wire
- Stripper - strips 12-20 AWG wire
- Cutter - ability to make cuts below pivot

**5950D Angled Wire Stripping Tool**

- Stripping dies on angled tip to work against bulkheads, firewalls
- Makes nearly flush cuts against flat surfaces and tight spaces



### 5054 Air brake service kit

- Includes 5055 manual slack adjuster puller, 5056 automatic slack adjuster puller, and 5057 clevis pin press



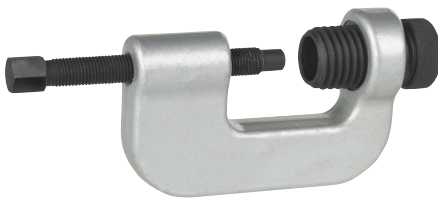
### 5055 Manual slack adjuster puller

- Special jaw design securely removes corroded slack adjusters off the S-cam
- Fits most manual puller types
- Doubles as pitman arm puller for 2011 - current Chevy/GMC 2500 and 3500 trucks, and 2009-2013 RAM 1500



### 5056 Automatic slack adjuster puller

- Works on Rockwell, Haldex, Gunite, Bendix adjusters, and more
- Won't damage surrounding components, pulls straight



### 5057 Clevis pin press

- Removes corroded clevis pins from brake air-chamber push rod
- Removes pin without damaging nearby components
- Doubles as broken bolt extractor, fits in tight spaces



### 4513 HD snap ring pliers set

- Extra-large 16" pliers for snap rings in heavy-duty applications
- Internal range: 3-1/16" to 6-1/4" (78mm to 159mm)
- External range: 3-1/2" to 6-1/2" (89mm - 165mm)
- Includes straight, 45, and 90-degree tips for a variety of applications

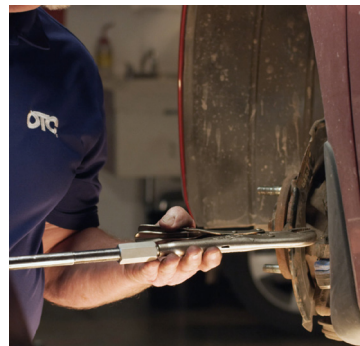
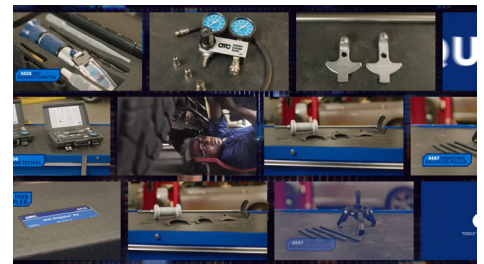


### 5081 S-Cam air brake spring tool

- Safely replace brake shoes on HD tractors and trailers
- Special hook holds the retaining spring during installation
- Press against the axle, retaining spring slides into place

**OTC HAS BEEN INVENTING, MANUFACTURING AND PERFECTING AUTOMOTIVE SPECIALTY TOOLS AND EQUIPMENT FOR OVER 100 YEARS.**

**DISCOVER THE TOP TOOLS TECHNICIANS NEED IN THE VIDEO SERIES BELOW.**



Scan the QR Code to find the Video Playlist.





### 5078 2,000-lb high-lift transmission jack

- Ideal capacity for truck and bus service
- Air-operated foot pump to easily lift and lower components
- Includes Allison 500/600 series transmission adapter



### 5019A 2,200-lb low lift transmission jack

- Handles the largest, heaviest HD transmissions with ease
- 8-1/4" low height fits under most aerodynamic truck skirting
- Includes 540231 adapter for Eaton Fuller RoadRanger transmissions
- Multi-tilt adjustment for easy R&I
- Swiveling pump handle allows raising from nearly any angle



### 1522A 2,000-lb low lift transmission jack

- Ultra-low profile fits under most aerodynamic truck skirting
- Includes 540231 adapter for Eaton Fuller RoadRanger transmissions
- 2-year limited warranty



### 1797 HD clutch adapter for transmission jacks

- Converts transmission jack into HD clutch handler
- Fits OTC 1521A, 1522A, 5130, 5019A, 1793A, 1794A, 5237, 1728, TJH10, TJHP10, TJHP15 jacks, and more



### 5091 HD spindle adapter

- Use with 4240A kingpin pusher to remove Kingpins in minutes
- Holds spindle assembly during Kingpin service; fits most standard HD truck bolt patterns and wheel stud sizes
- For 1522A, 5019A, 5130, and most other low-lift transmission jacks



### 553516 Differential mounting adapter

- Fits most common differentials on Category 7 and 8 trucks, including Eaton, Fuller, Rockwell, Meritor, Spicer, International, Mack, and more
- Securely holds differential during removal, service, and installation
- Fits 5019A, 5078, 1522A transmission jacks



### 5018A Truck clutch and flywheel handler

- Special memory knob keeps maintains removal height for easy reinstallation
- Holds most 14" and 15-1/2" HD clutches, up to 300 lbs
- Includes 2" splined shaft with 1-1/4" pilot
- Low 15" height allows access below side fairing
- 360-degree swivel head to properly align clutch during removal and installation



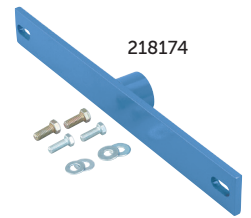
### 5015A Truck clutch and flywheel handler

- Holds most 14" and 15-1/2" HD clutches, up to 250 lbs
- Lifting range from 9" to 37"
- Side-lift design saves space



### Clutch handler adapters

- **600007:** Enables use of splined shaft designed for 5015A to be used on 5018A



### 5015A, 1797 adapters

- **600011:** 14-spline adapter for Eaton Fuller UltraShift Plus Transmission. 2" OD, 1.18" Pilot
- **600013:** 24-spline adapter for Volvo I-Shift and Mack mDrive clutches. 2" OD, 1.18" pilot
- **48625:** Splined shaft. 1-3/4" OD, 1-1/4" pilot
- **440533:** Splined shaft. 1-3/4" OD, 1" pilot
- **314386:** 1-3/4" OD shaft extension, for 2-plate clutch of Navistar 466 series
- **218174:** Flywheel handling attachment



### 5018A adapters

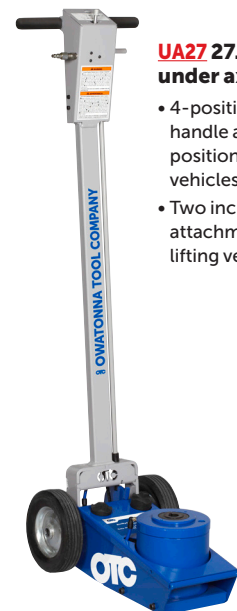
- **600005:** 14-spline adapter for Eaton Fuller UltraShift Plus Transmission. 2" OD, 1.18" Pilot. Includes 600007 for use with both 5015A and 5018A
- **600017:** 24-spline adapter for Volvo I-Shift and Mack mDrive clutches. 2" OD, 1.18" pilot
- **515686:** Splined shaft. 1-3/4" OD, 1-1/4" pilot
- **516159:** Splined shaft. 1-3/4" OD, 1" pilot
- **516160:** Flywheel handling attachment

Under-axle service jack	UA22	UA27
Capacity	22-ton	27.5-ton
Air pressure	90 - 145 PSI	90 - 175 PSI
Max height	20-2/3" with longest saddle	21-3/8" using longest saddle
Min height	8.27"	8-1/4"
Handle length	47.24" T handle with lowering lever and air-chuck hook	48-3/4" T handle with lowering lever and air-chuck hook
Footprint	22.63" x 11.73"	22" x 12"
Reach	69.87"	69.87"
Saddle	3" dia., round with center notch, includes 3 lengths	3" dia., round with center notch. Includes 2 saddle adapters
Frame height	8.27"	8.27"
Wheels	2 fixed; 7.88" rubberized steel	2 fixed; 7.88" rubberized steel



### UA22 22-ton under-axle hydraulic service jack

- Includes 3 saddle attachments for height adjustment; 3/4" saddle; 1-15/16" saddle; 3-7/8" saddle
- Self-retracting ram activated with handle-end controls



### UA27 27.5-ton under axle jack

- 4-position, 48" handle allows easy positioning under vehicles
- Two included saddle attachments increase lifting versatility



6637-ST



6637

6582

### Strut Tamer II Extreme

- New Standard in Strength and Safety: Meets the ASME PASE safety standards for spring compressors.
- Capable of safely compressing the largest strut springs.
- Extra-thick 5/8" steel arms for superior strength, stability, and safety
- It replaces the Strut Tamer Extreme with enhancements for quicker and safer service.
- Market-Leading Compression Force: Features the strongest compression force available, up to 4,000 pounds, suitable for large truck, SUV, and passenger car shock/strut assemblies.

#### 6637 Strut Tamer II

Wall-mount for stationary use when rebuilding shock-strut assemblies

#### 6637-ST Strut Tamer II with stand

Includes the Strut Tamer II Extreme and a stand with wheels for easy mobility and rebuilding shock-strut assemblies near the vehicle

#### 6582 Strut Tamer Stand

Separate stand to increase Strut Tamer portability in or outside of the shop



#### 1806A

### 3,900-lb Load-Rotor® positioning sling

- Compatible with cranes or hoists for efficient engine handling.
- Adjusts engine, transmission, or other components by turning the sling's 5/8" hex drive end with a standard speed handle and socket.
- Equipped with a 65-3/4" long chain (5/16") for robust support.
- Features a forged swiveling hook on each end for secure attachment.
- Comes with a pair of special mounting brackets for enhanced functionality.



#### 1545

### 1,500-lb capacity Motorcycle lift

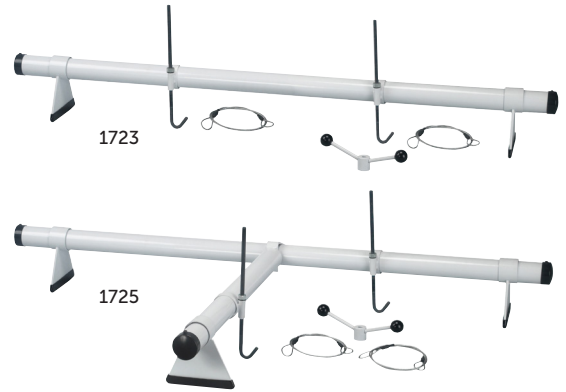
- 17" long skids for lifting large, wide cruisers.
- Lifting range 3-1/2" to 16-3/4".
- Removable handle for 360° access to load.
- Foot pedal release, Locking rear casters, Automatic safety lock for safe, secure and easy lifting
- Includes Two ratcheting tie-down straps for safety



#### 1572

### Easy roller vehicle dolly

- Clamps directly to pinch welds to prevent slippage during use
- Independently adjustable threaded lift saddle with rubber pads protects vehicle frame
- Universal design for use on all vehicle types without additional adapters
- 5" polypropylene casters
- Each unit has a capacity of 1800 lbs. (3600 lbs., pair)
- Height range from 9" (low) to 14" (high)



1723

1725

### Engine support bars

- Cutting-edge design self-centers load to prevent tipping on inclined surfaces.
- Smooth sliding legs adjust easily to accommodate different vehicle widths.
- PVC-coated support legs prevents scratching of vehicle surfaces.
- Spinner handle enables lightning-fast adjustment for convenience.

#### 1723 2-point Engine support bar, 500-lb capacity

#### 1725 3-point Engine support bar, 700-lb capacity



#### 4305

### Engine load leveler

- Designed to hook to a crane or hoist for handling and positioning large, bulky components.
- Adjustable horizontal tilt to compensate for off-center loads.
- Can be set to a specific angle for precise positioning of components.
- Supports a maximum load capacity of 1,500 lbs.



#### 1580

### Car dolly

- 1,500-lb capacity per dolly.
- Hydraulic lift mechanism with locking pin
- Fits tires up to 12" wide

**Jimmy Bars**

Jimmy Bars are forged from chrome alloy steel and heat treated to resist bending and breaking.

**7166** - 5/8" round, 18" long

**7167** - 3/4" round, 24" long

**7168** - 7/8" round, 30" long

**7420** - 7/8" round, 46" long

**7421A** - 1" round, 54" long

1513B



1515B

**Collision repair sets**

- Single-speed hydraulic hand pump for precise control
- Extension tubes, adapters for easy assembly and use
- Couplers are interchangeable with most competitive units

**1513B** - 4-ton ram with 4" stroke

**1515B** - 10-ton ram with 6" stroke

**1734A****300-lb capacity Heavy-duty wheel step**

- Tire-mounted wheel step provides quick, easy access to under-hood components.
- Designed for heavy-duty vehicles Class 7/8.
- Fits wheels from 22-1/2" to 24" diameter.
- Non-skid platform surface.

**1735B****2,000 lb. Capacity Heavy-Duty Motor-Rotor® Repair Stand**

- Handles a wide variety of engines, transmissions, torque converters, and rear axles from trucks, tractors, and construction machinery.
- The 50:1 ratio gearbox allows full rotation of mounted unit with just a turn of the crank and locks in position. Easily maneuvered when loaded.
- To ensure engine stability in all positions, this repair stand is equipped with a positive-crank handle locking mechanism.
- Twin-post design, featuring laterally adjustable, 3-position outboard support; provides an extremely stable work-holding unit.
- Locking rear wheels anchor stand in position.
- Covered by OTC Lifetime Marathon Warranty®.
- Includes 538578 universal arm assembly, quantity 4.

**1821****10-ton air operated crusher**

- Crushes up to 4 automotive filters at a time, in under 20 seconds
- 9" high crushing chamber for extra-tall filters

**1896****25-ton electric/hydraulic automotive oil filter crusher**

- Removes 95% of residual oil from filters
- Fits filters up to 15-1/4" tall and 6" diameter
- 2-gallon internal reservoir, designed to fit 30-gallon external drum reservoir
- Comes assembled

**6007****Lower Control Arm Prying Tool**

Installing a ball joint on a lower control arm typically requires the effort of two people. However, with this tool and our No. 7420 or 7421 pry bar - or any 7/8" diameter pry bar - it's a one-person job.

**1877****25-ton air/hydraulic heavy-duty oil filter crusher**

- Removes 95% of residual oil from filters
- Handles filters up to 12-1/2" tall, up to 6" diameter from HD trucks, construction equipment, farm equipment, and more
- Comes assembled

**1591B****10-ton Combination air lift & stand**

- Integrated Pin Type Stand Feature
- Lifting Range: (Unpinned): 18-3/4" - (Extension pinned): 50-1/2"
- Angle-adjustable 40" removable handle w/ 8' air hose
- Requires 200 PSI air pressure
- Large, flat-free wheels for easy transport

**1534A****300-lb Car / truck wheel step**

- Tire-mounted wheel step provides quick, easy access to under-hood components or vehicle roof.
- Designed for heavy-duty vehicles Class 7/8.
- Fits wheels from 14" - 20" diameter.
- Non-skid platform surface.

**Heavy-Duty Floor Cranes**

- Two-speed hydraulic hand pump for fast lifting
- Adjustable leg spread to clear vehicle wheels
- Telescoping boom gives additional reach

**1819** 2,200-lb capacity

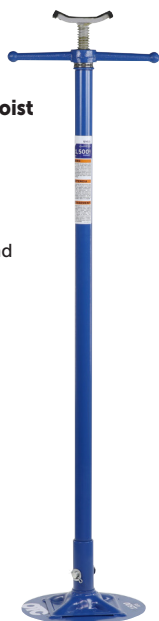
**1820** 4,400-lb capacity



## UH15

### 1,500 Lb Capacity Underhoist Auxiliary Stand

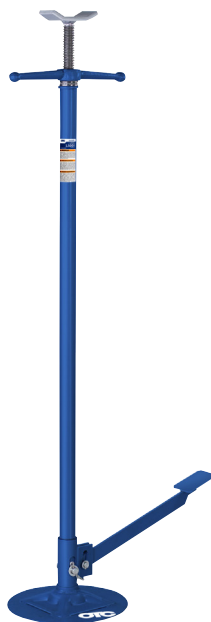
- Capacity: 1,500 lbs.
- Max. Height: 80.75"
- Min. Height: 54.25"
- Footprint: 11-7/8" flat round
- Adjustment: Threaded rod with bearing-mounted T-handle
- Saddle: 5-1/4" x 1-1/4" U-shape



## UH15FP

### 1,500 Lb Capacity Underhoist Auxiliary Stand with Foot Pedal

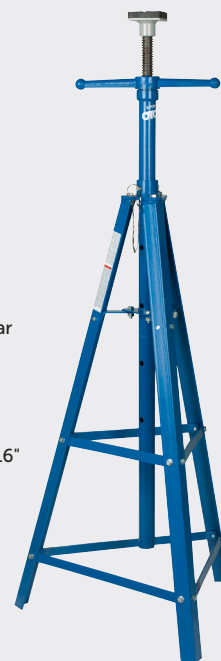
- Capacity: 1,500 lbs.
- Max. Height: 80.75"
- Min. Height: 54.25"
- Footprint: 11-7/8" flat round
- Adjustment: Foot pedal assist and threaded rod with bearing-mounted T-handle
- Saddle: 5-1/4" x 1-1/4" U-shape



## UH20

### 2-Ton Capacity High Reach Underhoist Supplementary Stand

- Capacity: 4,000 lbs., (2 tons)
- Max. Height: 85"
- Min. Height: 56-1/4"
- Footprint: 24" triangular tripod base
- Adjustment: Threaded rod with bearing-mounted T-handle
- Saddle: 3-3/16" x 3-3/16"



Auxiliary Stands are a freestanding device that can be manipulated to provide partial support for positioning of vehicle components during their installation and removal. An adjustable saddle sits atop a fixed column and base, providing high reach assistance to a technician removing or installing vehicle components like transmissions, radiators, driveshafts, exhaust systems, and catalytic converters. (not intended to stabilize or support vehicles).

The OTC UH20 is a high-reaching underhoist supplementary stand used for professional automotive service. This 2-ton capacity stand is designed to stabilize vehicles and prevent tipping while they are lifted on hoists. The 3-inch saddle, secured in a support column, is mounted to a stable tripod base. An easily controlled speed screw quickly brings the saddle into position.

## Everything from a single source.



**Committed to quality because your reputation depends on it.**

Meet the family  
[boschdiagnostics.com/about-us](https://boschdiagnostics.com/about-us)

**Bosch Customer Service**  
800 321-4889  
(Ext. 4, Option 2)

**OTC and Robinair Customer Service**  
800 533-6127  
(Option 1)

25081509\_Q4-2025-Muscle-Tools edition, Printed in U.S.A.

## Free Training Offer from Bosch

Sharpen your skills from the comfort of your shop. Sign up for a free live web training hosted by a Bosch expert & earn a certificate after the session. Scan the code to reserve your seat before the offer ends!



Explore the schedule and reserve your seat today.  
[bosch-training-solutions.com](https://bosch-training-solutions.com)

